

# SPRING 2024

**FACULTY  
CURRICULAR  
CONNECTIONS**  
in the arts



THE *Arts* AT MILLERSVILLE

## CURRICULAR CONNECTIONS in the arts

Millersville University's Office of Visual and Performing Arts supports faculty members in their teaching by offering experiential learning through artists sharing their talents and knowledge with students. We are committed to supporting the academic mission of Millersville University through the power of the arts, fostering connections between MU classes and visiting artists. If you haven't already discovered the breadth and variety of presentations at our performing and visual arts centers, we strongly encourage you to take full advantage of our world-class music, theater, film, and dance engagements as an educational tool for your students. This guide serves as a resource, highlighting a number of upcoming spring semester performances and the courses that may have curricular connections to those performances – and you may find connections that we have missed! Please peruse our full 2023-24 season brochure of events available at the Winter and Ware Center or online at [ArtsMU.com](https://ArtsMU.com).

## FREE TICKETS MU students and their children attend for FREE (with MU I.D.)

Abundant research has confirmed that experience with the arts fosters achievement and growth both in academia and in life. With your help, the Millersville University Office of Visual and Performing Arts strives to provide such opportunities for our students. If you are interested in inviting your students to any of our performances listed in this guide as part of your program of study, we will gladly provide them (and you, as well) with free tickets.

**For FREE TICKETS students visit the MU box office on any day and show their university I.D. card. They can also choose to wait, and show their MU I.D. at the door of the venue hosting the performance on its scheduled date, but please keep in mind that booking earlier is the best option for students as tickets are subject to availability.**

## VISITING ARTISTS and residencies

Guest artists offer Millersville students and faculty members unforgettable personal interactions via classroom visits, master classes, panel discussions, lecture-demonstrations and social events. Each term, we offer a number of opportunities for the campus community to interact with visiting artists who come to perform. These occasions can both enrich the performance experience and illuminate the artistic, social, political, or spiritual aspect of the artists' work for your students. A schedule of artist availability for such complementary programming can be found on the artists' pages in this guide. If you see a curricular connection that we can pursue together, your students will thank you for it!

**To schedule RESIDENCY OPPORTUNITIES: Contact Barry Kornhauser, Assistant Director of Campus & Community Engagement at [Barry.Kornhauser@millersville.edu](mailto:Barry.Kornhauser@millersville.edu) or call x7812.**



Scan to visit [ArtsMU.com](https://ArtsMU.com)



**CONTACT** [barry.kornhauser@millersville.edu](mailto:barry.kornhauser@millersville.edu)

## ACADEMIC DEPARTMENT/SUBJECT INDEX

### ANTHROPOLOGY

Cellogayageum	4
Drum Tao	7
A Tree of Life	10
Thunda N Mimosas	11
Our American Family	12
Celidh	13
Kuniko Yamamoto	14
Brandon Leake	15
Acts of Welcome	16
The Ride Ahead	19
Proud People of the Pacific	20

### ART & DESIGN

Kuniko Yamamoto	14
Poli Pop	18

### COMMUNICATION (see also THEATRE)

Cellogayageum	4
Lift Ev'ry Voice	5
Drum Tao	7
Shadows of the 60s	9
A Tree of Life	10
Thunda N Mimosas	11
Our American Family	12
Celidh	13
Kuniko Yamamoto	14
Brandon Leake	15
Acts of Welcome	16
Trailblazing Women of Country	17
Poli Pop	18
The Ride Ahead	19
Proud People of the Pacific	20

### EDUCATION

Shadows of the 60s	9
Thunda N Mimosas	11

#### EDUCATION FOUNDATIONS

Kuniko Yamamoto	14
-----------------	----

#### EARLY CHILDHOOD

A Tree of Life	10
Our American Family	12
Poli Pop	18
The Ride Ahead	19

### ENGLISH

Lift Ev'ry Voice	5
Drum Tao	7



Shadows of the 60s	9
A Tree of Life	10
Thunda N Mimosas	11
Our American Family	12
Brandon Leake	15
Trailblazing Women of Country	17
The Ride Ahead	19
Proud People of the Pacific	20

### GOVERNMENT

Thunda N Mimosas	11
Brandon Leake	15

### HISTORY

Thunda N Mimosas	11
------------------	----

### JAPANESE

Drum Tao	7
Kuniko Yamamoto	14

### MUSIC

Cellogayageum	4
Lift Ev'ry Voice	5
American String Quartet	6
Drum Tao	7
Louis! Louis! Louis!	8
Shadows of the 60s	9
Celidh	13
Acts of Welcome	16
Trailblazing Women of Country	17
Proud People of the Pacific	20

### PSYCHOLOGY

A Tree of Life	10
Thunda N Mimosas	11
Our American Family	12
Brandon Leake	15
The Ride Ahead	19

### SOCIAL WORK

Cellogayageum	4
Drum Tao	7
A Tree of Life	10
Thunda N Mimosas	11
Our American Family	12
Celidh	13
Brandon Leake	15
Acts of Welcome	16
Poli Pop	18
The Ride Ahead	19
Proud People of the Pacific	20

### SOCIOLOGY

Shadows of the 60s	9
A Tree of Life	10
Thunda N Mimosas	11
Our American Family	12
Brandon Leake	15
Acts of Welcome	16
The Ride Ahead	19

### SPECIAL EDUCATION

Lift Ev'ry Voice	5
Drum Tao	7
Shadows of the 60s	9
Kuniko Yamamoto	14
Brandon Leake	15
Poli Pop	18
The Ride Ahead	19

### THEATRE

Shadows of the 60s	9
Brandon Leake	15
Poli Pop	18

### WELLNESS

Our American Family	12
The Ride Ahead	19

### WOMEN'S STUDIES

Thunda N Mimosas	11
Trailblazing Women of Country	17





## CELOGAYAGEUM

Thursday, February 1 | 7:30 P.M.  
Biemesderfer Hall | Winter Center  
FREE with MU Student I.D.

Cellist Sol Daniel Kim and Gayageum player Dayoung Yoon have seamlessly blended these two unique string instruments, cello and traditional Korean 12-string zither, to create a harmonious symbiosis in sound and style where classical meets cutting edge. This engagement is made possible through the Melva S. McIlwaine Concert and Masterclass Endowment Fund and by the Performing Arts Global Exchange program of MidAtlantic Arts with support from the National Endowment for the Arts.

## CURRICULAR CONNECTIONS

ANTH 121	Cultural Anthropology
COMM 101	Intro to Communication
COMM 317	Intercultural Communication
MUSI 100	Music & Culture
MUSI 103	Language of Music
MUSI 373	Art of Instrumental Techniques
MUSI 397	International Music Business
SOWK 350	Encounters in Human Diversity

## RESIDENCY ACTIVITIES

Recital Hour

A mix of performance and cultural exploration of South Korean music and lifestyle with Q&A

Wednesday, January 31 | 3:00 P.M.  
Biemesderfer Hall | Winter Center



## **LIFT EV'RY VOICE**

Friday, February 2 | 6:30 P.M.

Steinman Hall | Ware Center

FREE

A collaborative performance celebrating Black History in America, scripted by Reji Woods from landmark speeches, devotional music, and heroic letters.

ASL Interpretation | Sensory-Friendly  
Accommodations

# **WE** *the* **PEOPLE** *First Fridays*



## **CURRICULAR CONNECTIONS**

COMM 100	Fundamentals of Speech
COMM 101	Intro to Communication
ENGL 333	African-American Literature I
ENGL 242-01	Riding Our World: Literature of Disability
MUSI 100	Music & Culture
MUSI 263	Popular Music
SPED 101	Orientation to Special Educ
SPED 321	Severe Disability in Inclusive Settings
SPED 331	Positive Learning Environ for All
SPED 443	Reflective Practices

## **RESIDENCY ACTIVITIES**

School Day Matinees

Wednesday, Feb. 21 & Thursday, Feb. 22 | 10:30 A.M.

Steinman Hall | Ware Center



## **AMERICAN STRING QUARTET**

Saturday, February 3 | 7:30 P.M.

Biemesderfer Hall | Winter Center

FREE with MU Student I.D.

Internationally recognized as one of the world's finest quartets, ASQ has earned its title through presentations of the complete quartets of Beethoven, Schubert, Schoenberg, Bartok, and Mozart, and having won widespread critical acclaim of the luxurious sound for which it is famous.

## **CURRICULAR CONNECTIONS**

MUSI 100	Music & Culture
MUSI 103	Language of Music
MUSI 363	Music History/Lit 2
MUSI 373	Art of Instrumental Techniques

## **RESIDENCY ACTIVITIES**

Masterclass for Celebrate Strings Day

Saturday, February 3 | 1:00 P.M.

Biemesderfer Hall | Winter Center



## DRUM TAO – 30th ANNIVERSARY

Friday, February 9 | 7:30 P.M.

Clair Hall | Winter Center

FREE with MU Student I.D.

Celebrating 30 years, DRUM TAO's awe-inspiring percussive precision is world-renowned! A performance of powerful Wadaiko drums coupled with the beautiful melody of Japanese flutes and harps makes for a spectacular journey into Asian entertainment for a new generation.

Audio-Description

## CURRICULAR CONNECTIONS

ANTH 121	Cultural Anthropology
COMM 317	Intercultural Communication
ENGL 242-01	Riding Our World: Literature of Disability
JAPN 102	Elementary Japanese
MUSI 100	Music & Culture
MUSI 103	Language of Music
MUSI 153	Percussion Techniques
MUSI 363	Music History/Lit 2
MUSI 373	Art of Instrumental Techniques
SOWK 350	Encounters in Human Diversity
SPED 101	Orientation to Special Education
SPED 321	Severe Disability in Inclusive Settings
SPED 331	Positive Learning Environ for All
SPEDK 443	Reflective Practices





**JUMAANE SMITH: LOUIS! LOUIS! LOUIS!**

Friday, February 16 | 7:30 P.M.

Steinman Hall | Ware Center

FREE with MU Student I.D.

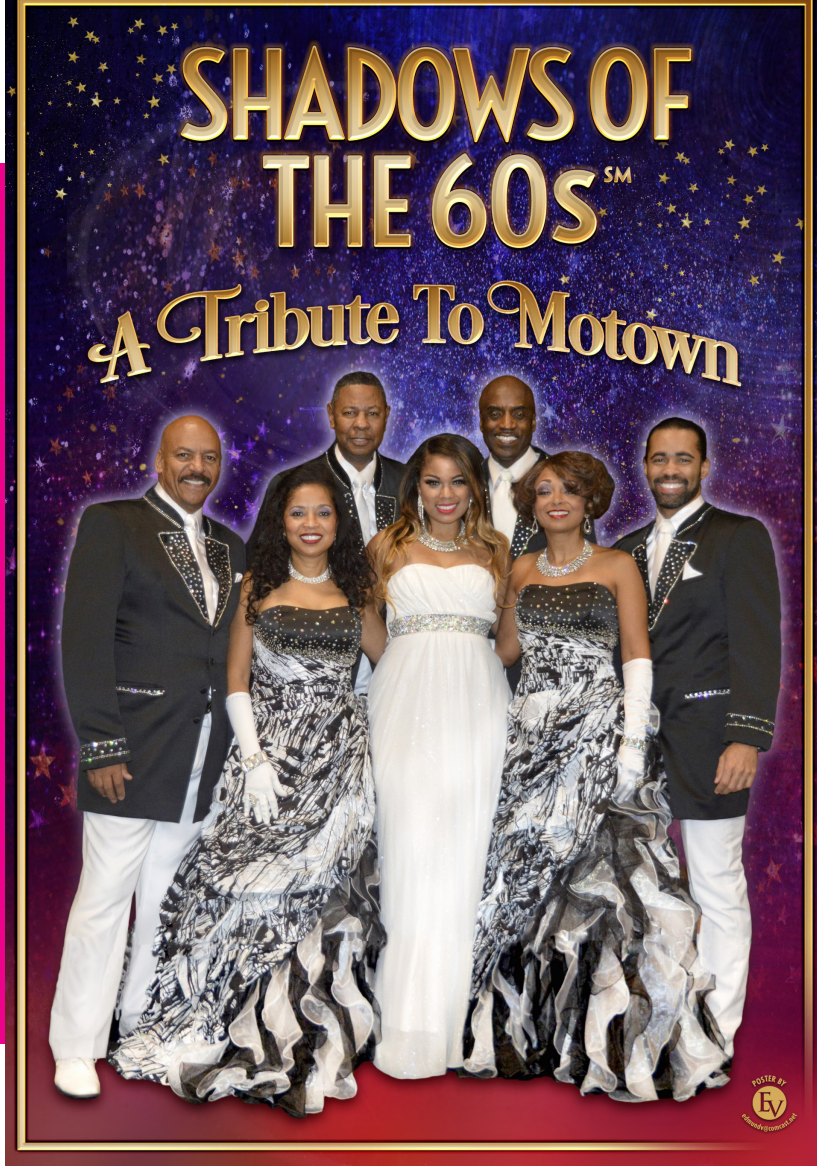
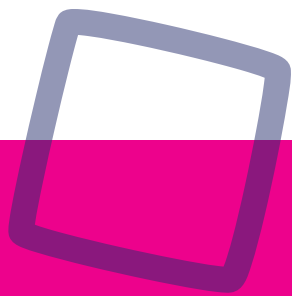
Michael Buble's long-time sideman, trumpeter, and vocalist Jumaane Smith celebrates the origins of jump blues and jazz by honoring the three famous "Louis" – Armstrong, Prima, and Jordan – with thrilling renditions of timeless classics along with new works by Smith himself.

**CURRICULAR CONNECTIONS**

MUSI 100	Music & Culture
MUSI 103	Language of Music
MUSI 124	Commercial Music
MUSI 263	Popular Music
MUSI 290	Music Industry
MUSI 363	Music History/Lit 2
MUSI 424	Jazz Ensemble







## SHADOWS OF THE 60s: A TRIBUTE TO MOTOWN

Saturday, February 24 | 7:30 P.M.

Steinman Hall | Ware Center

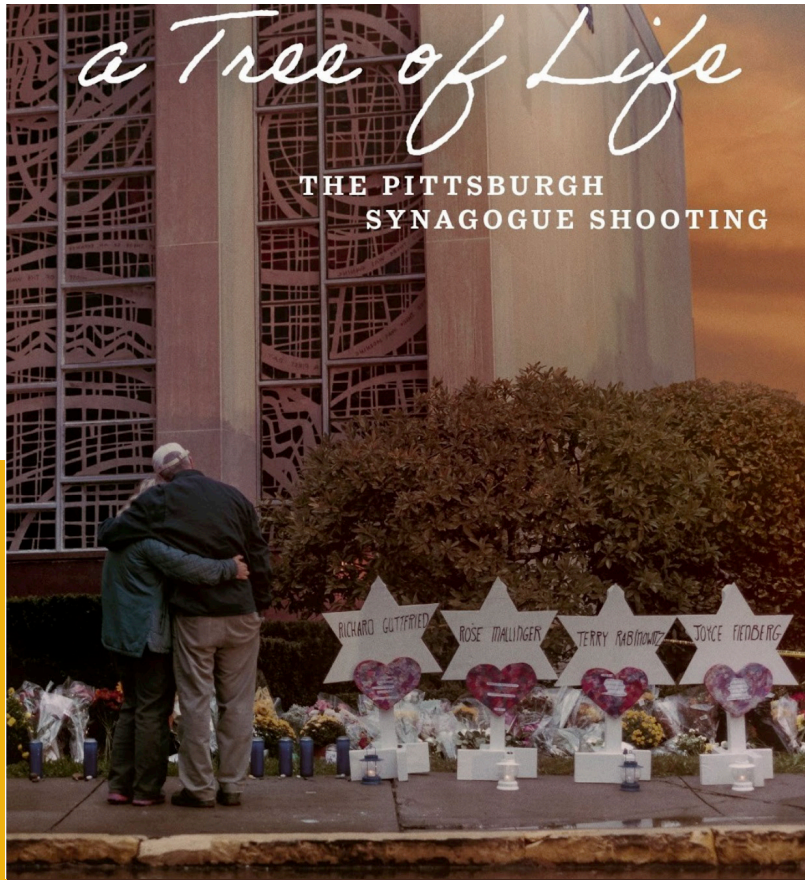
FREE with MU Student I.D.

Relive the tremendous legacy of Motown's legendary stars with memorable hits including "My Girl," "Ain't No Mountain High Enough," and "Second That Emotion." This highly interactive and visually stunning production features top industry musicians and singer, exquisitely designed costumes, and dazzling choreography – promising to have you 'dancing in the street!'

[Audio Description](#)

## CURRICULAR CONNECTIONS

COMM 101	Intro to Communication
EDUC 433	Gender & Race Issues
ENGL 333	African-American Literature I
ENGL 242-01	Riding Our World: Literature of Disability
ENGL 242-02	Riding Our World: American ID
MUSI 100	Music & Culture
MUSI 103	Language of Music
MUSI 124	Commercial Music
MUSI 263	Popular Music
MUSI 290	Music Industry
SOCY 101	Intro to Sociology
SPED 101	Orientation to Special Education
SPED 321	Severe Disability in Inclusive Settings
SPED 331	Positive Learning Environ for All
SPEDK 443	Reflective Practices
THEA 120	Stage Craft



# a Tree of Life

## THE PITTSBURGH SYNAGOGUE SHOOTING

ON SCREEN | IN PERSON  
IN PARTNERSHIP WITH MU LEARNING INSTITUTE

### A TREE OF LIFE

Directed by TRISH ADLESIC

Thursday, February 29 | 6:15 P.M.

Steinman Hall | Ware Center

FREE

A deeply personal portrait of the survivors, families, and community of the eleven people killed in the 2018 Pittsburgh synagogue shooting, the deadliest antisemitic attack in U.S. history. The film sheds light on the collective trauma suffered by a tight-knit group and brings into sharp focus the hate-based rhetoric that surrounds many of the mass shootings today.

### CURRICULAR CONNECTIONS

ANTH 227	Culture Through Film
COMM 101	Intro To Communication
COMM 121	Intro To Media Arts Production
COMM 437	Documentary Filmmaking II
ENGL 240	The Art of Film
ENGL 242-02	Riding Our World: American ID
ENGL 482	Film in American Society
ERCH 315	Famly/Community: Aspects of Diversity
PSYC 100	General Psychology
PSYC 317	Social Psychology
SOCY 101	Intro To Sociology
SOCY 110	Social Problems
SOWK 203	Human Behavior & Social Environ
SOWK 309	SOWK Behavior & Emotion Health
SOWK 315	Grief & Bereavement
SOWK 323	Human Behavior & Social Environ II
SOWK 350	Encounters in Human Diversity
SOWK 511	Human Behavior in Social Environ II

### RESIDENCY ACTIVITIES

Classroom presentations conducted by  
director Trish Adlesic  
Thursday, February 29  
Times TBD

Pre-screening panel discussion at 6:15 P.M.  
& post-screening Q&A with director

# ON SCREEN IN PERSON



## THUNDA N MIMOSAS

Friday, March 1 | 6:30 P.M.

Steinman Hall | Ware Center

FREE

Honoring Women's History Month, this is a Poetry Showcase and Open Mic presented by the inimitable Thunda Khatt; includes light refreshments.

# WE the PEOPLE

## First Fridays



### CURRICULAR CONNECTIONS

ANTH 344	Gender, Race, & Class
COMM 100	Fundamentals of Speech
COMM 101	Intro To Communication
EDUC 433	Gender & Race Issues
ENGL 242-02	Riding Our World: American ID
ENGL 333	African-American Literature I
GOVT 100	Politics & Popular Culture
HIST 200	Reimagining Holidays & Heroes
PSYC 317	Social Psychology
PSYC 318	Psychology of Racism
SOCY 101	Intro To Sociology
SOCY 211	Social Problems
SOWK 102	Modern Social Welfare Dilemmas
SOWK 203	Human Behavior & Social Environment
SOWK 323	Human Behavior & Social Environment II
SOWK 350	Encounters in Human Diversity
SOWK 511	Human Behavior & Social Environment II
WSTU 220	Intro To Women's & Gender Study

# ON SCREEN IN PERSON

ON SCREEN | IN PERSON  
IN PARTNERSHIP WITH MU LEARNING INSTITUTE

## OUR AMERICAN FAMILY

Directed by Hallee Adelman and Sean King O'Grady

Wednesday, March 13 | 6:15 P.M.

Steinman Hall | Ware Center

FREE

A radically honest portrait of five family members grappling with the legacy of generational addiction as they fight to heal resentments and pull each other out of the deepest depths.



## CURRICULAR CONNECTIONS

ANTH 121	Cultural Anthropology
ANTH 227	Culture Through Film
COMM 100	Fundamentals of Speech
COMM 101	Intro To Communication
COMM 121	Intro To Media Arts Production
COMM 437	Documentary Filmmaking II
ENGL 240	The Art of Film
ENGL 242-02	Riding Our World: American ID
ENGL 482	Film in American Society
ERCH 315	Family/Community: Aspects of Diversity
PSYC 100	General Psychology
PSYC 227	Development Child & Adolescent
PSYC 22 8	Life Span Human Development
PSYCH 311	Psychology of Drug Addiction
PSYC 317	Social Psychology
SOCY 101	Intro To Sociology
SOCY 210	Sociology of the Family
SOCY 211	Social Problems
SOWK 102	Modern Social Welfare Dilemmas
SOWK 203	Human Behavior & Social Environ
SOWK 309	SOWK Behavior & Emotion Health
SOWK 313	Family Violence
SOWK 323	Human Behavior & Social Environ II
SOWK 511	Human Behavior in Social Environ II
SOWK 515	Social Welfare Policy
WELL 175	Wellness

## RESIDENCY ACTIVITIES

Classroom presentations conducted by director Hallee Adelman & film family mother Linda Geraghty

Tuesday, March 12 & Wednesday, March 13

Times TBD

Pre-screening panel discussion at 6:15 P.M.

& post-screening Q&A with director and mom featured in the film



## CEILIDH: AN EVENING OF IRISH MUSIC & DANCE

Friday, March 15 | 7:30 P.M.  
Steinman Hall | Ware Center  
FREE with MU Student I.D.

Experience the friendly spirit of an Irish social gathering – a ceilidh, or house party – featuring Celtic music, dance, songs, and storytelling by the award-winning step group Darrah Carr Dance, setting the mood for the St. Patrick's Day weekend.



### CURRICULAR CONNECTIONS

ANTH 121	Cultural Anthropology
COMM 317	Intercultural Communication
MUSI 100	Music & Culture
MUSI 103	Language of Music
SOWK 350	Encounters in Human Diversity

## KUNIKO YAMAMOTO: JAPANESE STORYTELLING WITH MASKS, MIME, & MUSIC | ORIGAMI TALES

Saturday, March 23 | 1:00 P.M.

Pre-show activities start at 12:00 P.M.

Steinman Hall | Ware Center

Asian culture comes to life through engaging enactments of myths and fables from ancient and modern Japan. Spiced with social revelations to educate and amuse, the storytelling included the use of uniquely designed masks and intricately folded paper animals to help tell the tales.

[ASL Interpretation](#) / [Sensory-Friendly Accommodations](#)

FAMILY  
**FUN**  
FEST



### CURRICULAR CONNECTIONS

ANTH 121	Cultural Anthropology	SOWK 350	Encounters in Human Diversity
ART 128	Art Integration	SPED 101	Orientation to Special Education
COMM 100	Fundamentals of Speech	SPED 321	Severe Disability in Inclusive Settings
COMM 101	Intro To Communication	SPED 331	Positive Learning Environ for All
COMM 317	Intercultural Communication	SPED 443	Reflective Practices
ENGL 242-01	Riding Our World: Literature of Disability	THEA 120	Stagecraft
ERCH 110	Intro To Early Childhood	THEA 230	Acting II
ERCH 316	Creative Experiences Young Child		
ERCH 435	Literature for the Young Child		
JAPN 102	Elementary Japanese		



## AN EVENING WITH BRANDON LEAKE

Thursday, April 4 | 7:30 P.M.

Steinman Hall | Ware Center

FREE with MU Student I.D.

Spoken word poet, author, artistic educator, motivational speaker AND winner of America's Got Talent 2020, Brandon Leake will share his passion for art, his love of spoken word, and finding peace in a challenging world in an inspiring night of poetry, reflection, and insight by this world-famous wordsmith. Includes post-performance Meet & Greet | Q&A

ASL Interpretation

## RESIDENCY ACTIVITIES

Workshops & classroom presentations  
Wednesday, April 3

Community or MU workshop  
Friday, April 5

## CURRICULAR CONNECTIONS

ANTH 344	Gender, Race & Class
COMM 100	Fundamentals of Speech
COMM 101	Intro To Communication
ENGL 333	African-American Literature I
ENGL 242-01	Riding Our World: Literature of Disability
ENGL 242-02	Riding Our World: American ID
GOVT 100	Politics & Popular Culture
PSYC 318	Psychology of Racism
SOCY 101	Intro To Sociology
SOCY 102	Modern Social Welfare Dilemmas
SOWK 203	Human Behavior & Emotion Health
SOWK 350	Encounters in Human Diversity
SPED 101	Orientation to Special Education
SPED 321	Severe Disability in Inclusive Settings
SPED 331	Positive Learning Environ for All
SPED 443	Reflective Practices
THEA 230	Acting II

## DEFICIENCIES

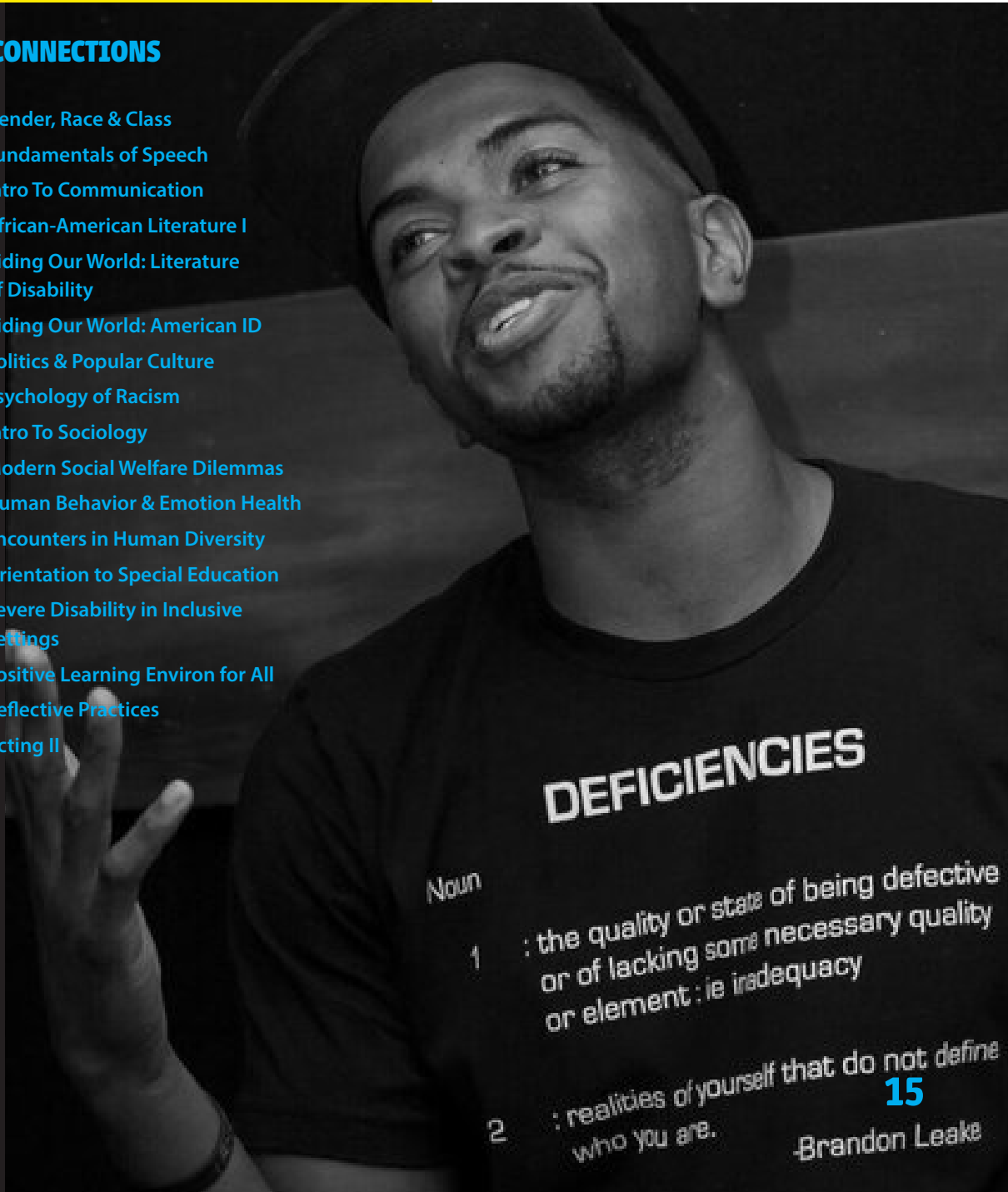
Noun

1 : the quality or state of being defective or of lacking some necessary quality or element : ie inadequacy

2 : realities of yourself that do not define who you are.

15

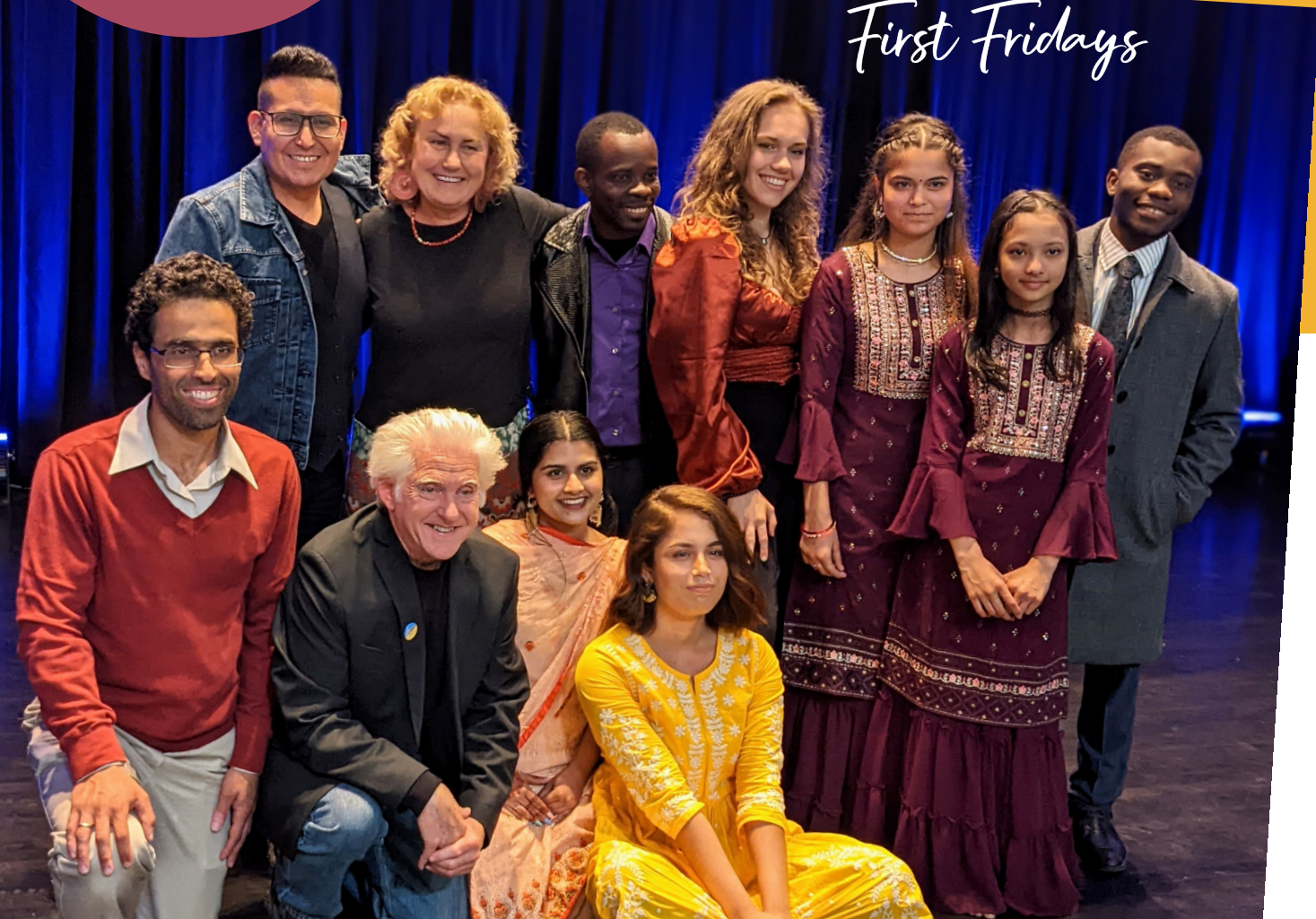
-Brandon Leake





# WE the PEOPLE

*First Fridays*



## ACTS OF WELCOME

Friday, April 5 | 6:30 P.M.

Steinman Hall | Ware Center

FREE

Our annual celebration of the artistry of Lancaster's treasured refugee and immigrant communities, featuring performers from different cultures now living in our community and performing in a variety of genres.

## CURRICULAR CONNECTIONS

ANTH 121	Cultural Anthropology
COMM 100	Fundamentals of Speech
COMM 101	Intro To Communication
COMM 317	Intercultural Communication
ENGL 242-02	Riding Our World: American ID
MUSI 100	Music & Culture
SOCY 101	Intro To Sociology
SOCY 211	Social Problems
SOWK 102	Modern Social Welfare Dilemmas
SOWK 203	Human Behavior & Social Environ
SOWK 350	Encounters in Human Diversity
SOWK 515	Social Welfare Policy



## **TRAILBLAZING WOMEN OF COUNTRY— A TRIBUTE TO PATSY, LORETTA, AND DOLLY**

Saturday, April 13 | 7:30 P.M.

Steinman Hall | Ware Center

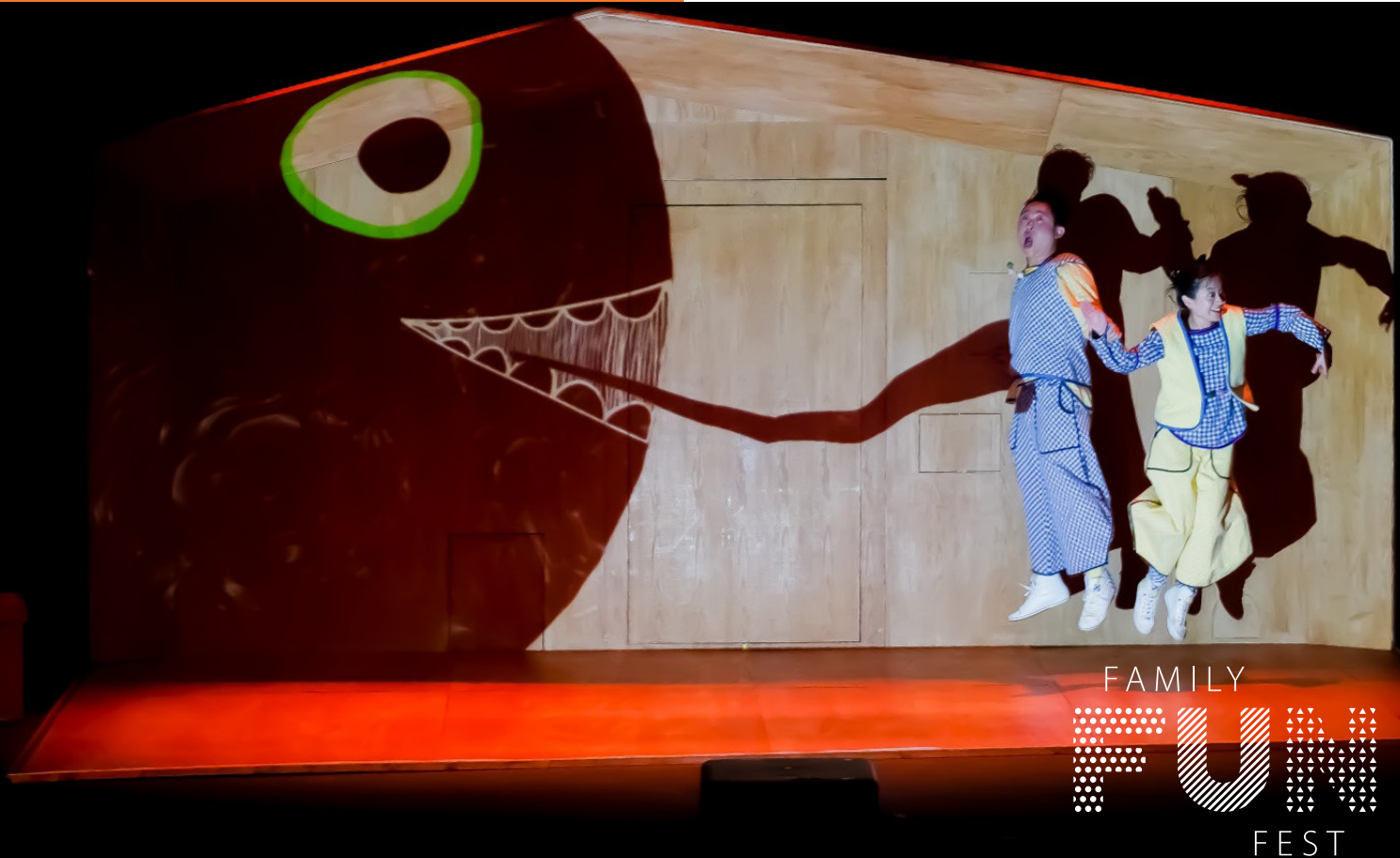
FREE with MU Student I.D.

Experience a legacy of musical excellence, earthy glamour, and unapologetic authenticity as Patsy Cline, Loretta Lynn, and Dolly Parton are brought to life by today's rising stars of country music accompanied by a 5-member all female backing ensemble.

## **CURRICULAR CONNECTIONS**

COMM 100	Fundamentals of Speech
COMM 101	Intro To Communication
ENGL 242-02	Riding Our World: American ID
MUSI 100	Music & Culture
MUSI 227	Women's Choir
MUSI 263	Popular Music
WSTU 220	Intro To Women's & Gender Study





## SOUTH KOREA'S BRUSH THEATRE

### **POLI POP**

Saturday, April 20 | 1:00 P.M.

Pre-show activities start at 12:00 P.M.

Post-show Q&A with artists

Steinman Hall | Ware Center

FREE with MU Student I.D.

Siblings Poli and Pola's boundless imagination takes them on a surreal journey full of surprise and joy – leading to something ferocious lurking in the shadows. Join them for a continuous fun-house ride created through Brush Theatre's use of incredible technology and special effects.

ASL Interpretation | Sensory Friendly Accommodations

## CURRICULAR CONNECTIONS

ART 128	Art Integration
COMM 101	Intro To Communication
COMM 121	Intro To Media Arts Production
COMM 317	Intercultural Communication
DESN 342	Kinetic Design & Animation
ENGL 242-01	Riding Our World: Literature of Disability
ERCH 316	Creative Experiences Young Child
SOWK 350	Encounters in Human Diversity
SPED 101	Orientation to Special Education
SPED 321	Severe Disability in Inclusive Settings
SPED 331	Positive Learning Environ for All
SPED 443	Reflective Practices
THEA 120	Stagecraft
THEA 230	Acting II



ON SCREEN | IN PERSON  
IN PARTNERSHIP WITH MU LEARNING INSTITUTE  
and MU DISABILITY FILM FESTIVAL

## THE RIDE AHEAD

Directed by DAN HABIB

Thursday, April 25 | 6:15 P.M.

Steinman Hall | Ware Center

FREE

Twenty-one-year-old Samuel Habib wants to launch into the bold adult world he craves – to date, leave home, go to college – but he drives a 350-pound wheelchair, uses a communication device, and can have a seizure at any moment. Can guidance from America's most rebellious disability activists empower his path forward?

Captioning | ASL Interpretation | Audio-Description

## RESIDENCY ACTIVITIES

Classroom presentations conducted by director  
Dan Habib

Thursday, April 25

Times TBD

Pre-screening panel discussion at 6:15 P.M.  
& post-screening Q&A with director

## CURRICULAR CONNECTIONS

ANTH 227	Culture Through Film
COMM 100	Fundamentals of Speech
COMM 101	Intro To Communication
COMM 121	Intro To Media Arts Production
COMM 437	Documentary Filmmaking II
ENGL 240	The Art of Film
ENGL 242-01	Riding Our World: Literature of Disability
ERCH 315	Family/Community: Aspects of Diversity
PSYC 100	General Psychology
PSYC 227	Development Child & Adolescent
PSYC 228	Life Span Human Development
PSYC 317	Social Psychology
SOCY 101	Intro To Sociology
SOCY 210	Sociology of the Family
SOCY 211	Social Problems
SOWK 102	Modern Social Welfare Dilemmas
SOWK 203	Human Behavior & Social Envrn
SOWK 309	SOWK Behavior & Emotion Health
SOWK 350	Encounters in Human Diversity
SOWK 515	Social Welfare Policy
SPED 101	Orientation to Special Education
SPED 321	Severe Disability in Inclusive Settings
SPED 331	Positive Learning Environ for All
SPED 443	Reflective Practices
WELL 175	Wellness

**ON SCREEN**  
**IN PERSON**



**PROUD PEOPLE OF THE PACIFIC**

Friday, May 3 | 6:30 P.M.  
Steinman Hall | Ware Center  
**FREE**

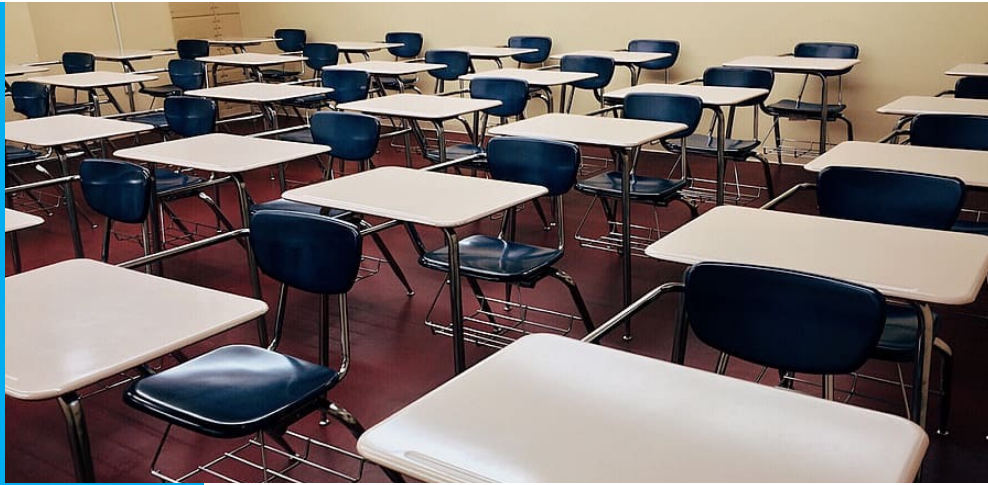
In celebration of Asian-Pacific Cultural Heritage Month, regional singers, dancers, musicians, and others of AAPI heritage will take the stage to present exciting and beautiful performances reflecting the varied and dynamic cultures of Asia and the Pacific Islands.

**CURRICULAR CONNECTIONS**

ANTH 121	Cultural Anthropology
COMM 317	Intercultural Communication
ENGL 242-02	Riding Our World: American ID
MUSI 100	Music & Culture
MUSI 103	Language of Music
SOWK 350	Encounters in Human Diversity







### **BONUS EVENT:**

Join the discussion this spring for the Equity and Justice in Education series addressing three main questions:

**1. Why is equity in schools so difficult to address?**

Attend the thought-provoking Carter Woodson lecture featuring David Stovall, author, professor, and activist, and respondents Keith Miles, Superintendent of the School District of Lancaster and Kareena Rios, school board member, School District of Lancaster.

**2. What is equity and justice in education?**

Actively participate and get inspired in the stimulating Engage for Change Community Forum, featuring Stacie Blake, CEO of the YWCA, Keith Miles, Superintendent of the School District of Lancaster, and Ty Bair, co-founder of Advantage Lancaster, Reynolds Middle School social studies teacher.

**3. How do we address equity and justice in education in the publication? Collaborate and express your thoughts, ideas, and passions in the Engage for Change Journal Writing Workshops.**

More details will be coming soon. For further questions, please contact the organizers of the events.

**Woodson Lecture:**

Caleb Corkery | [caleb.corkery@millersville.edu](mailto:caleb.corkery@millersville.edu)

**Engage for Change Community Forum & Writing Workshops:**

Kerrie Farkas | [kerrie.farkas@millersville.edu](mailto:kerrie.farkas@millersville.edu)

Tatiana Pashkova-Balkenhol

[tatiana.pashkova-balkenhol@millersville.edu](mailto:tatiana.pashkova-balkenhol@millersville.edu)

### **SAVE THE DATES!**

### **EQUITY & JUSTICE IN EDUCATION PUBLIC SERIES**

Tuesday, February 27 | 7:00 P.M.

Carter Woodson Lecture

Thursday, March 14 | 4:00-6:00 P.M.

Engage for Change Community Forum

Tuesdays, March 19, 26, April 2 | 4:00-5:30 P.M.

Engage for Change Journal Writing Workshops

Should all students experience a welcoming, accessible, and inclusive learning environment where they can thrive? Do all students experience such an environment? What are schools doing to create such an environment and what changes would you like to see in our schools?

*"Awesome! I really appreciate all of these wonderful opportunities that you bring to our students and community."*

*- Dr. Ping Yang, Communications Department*

**MU STUDENTS RESPOND TO THESE  
ARTIST INTERACTIONS:**

*"Super fun! Bring more guests please!"*

*"LOVED IT"*

*"I loved the change of pace to have a speaker in class. It is so nice to learn directly from the source about something we study."*

*"Amazing"*

*"Please never stop exposing cultures to students."*

*"Introduced new opportunities exploring areas not talked about much."*

*"I think it is always important to learn about others' backgrounds. So you can understand what it is like to stand in someone else's shoes."*

*"It was informational and definitely gave me a different insight."*

*"That was bad ass!"*

**ARTSMU.COM**  
**717-871-7600**